



Phone: 877.630.1800

Cork Flooring T-Moulding



Transition Solutions for similar height hard surface floors

T- Molding is mandatory for use with adjoining similar height surfaces in all doorways less than 48" in length.



1. Allow a gap measuring approx 1" (25mm) width between the newly installed cork floor planks (and underlayment) and the adjoining cork/hardwood floor or similar height surface.
2. Install the trim track in the 1" (25mm) wide channel between the Exterior Doorway and the newly installed cork/hardwood floor planks. Center the track in the 1" wide channel. Once clicked into the track the lip of the trim should just cover the cork/hardwood floor on both sides of the transition. Attach the trim track to the subfloor once you determine the centered position for the track within the channel. For wood floors use 4x1/2" screws. For concrete floors use concrete nails and/or a suitable cement adhesive to adhere the track to the cement.
3. Using the trim piece, cut to the desired length, angle the trim into the track. Next starting from the right and working your way to the left, gently begin pushing the trim into the track slowly until the entire trim length is engaged into the track.
4. Always remember to place a piece of plywood over any threshold or transition when moving heavy objects such as furniture.

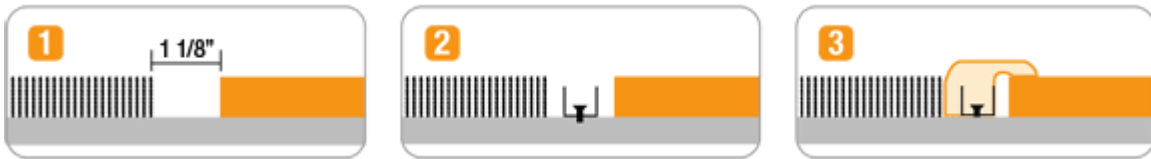


Phone: 877.630.1800

Cork Flooring Carpet Reducer



Carpet Reducer Moulding provides the required expansion/contraction gap for cork/hardwood floors meeting up to Carpet surfaces. Detailed installation instructions end molding trim.



1. Allow a gap measuring approx 1 1/8 in width between the newly installed Cork/hardwood floor planks (and underlayment) and the adjoining carpet surface.
2. Install the trim track in the 1 1/8 wide channel between the carpet surface and the newly installed cork/hardwood floor planks. Determine the approx position of the trim track within the channel. Take a moment to measure how the trim will be placed into the channel. The grooves on the back of the trim indicate where the track will insert. Hold the trim slightly above the channel and to determine the desired position. Mark the desired location on the subfloor with a pencil. Once clicked into the track the lip of the trim should just cover the cork/hardwood floor on one side while butting right up to the carpet on the other side. Attach the trim track to the subfloor once you determine the desired position for the track within the channel. For wood floors use 4x1/2" screws. For concrete floors use concrete nails and/or a suitable cement adhesive to adhere the track to the cement.
3. Using the trim piece, cut to the desired length, angle the trim into the track. Next starting from the right and working your way to the left gently begin pushing the trim into the track until the entire trim length is engaged into the track.
4. Always remember to place a piece of plywood over any threshold or transition when moving heavy objects such as furniture.

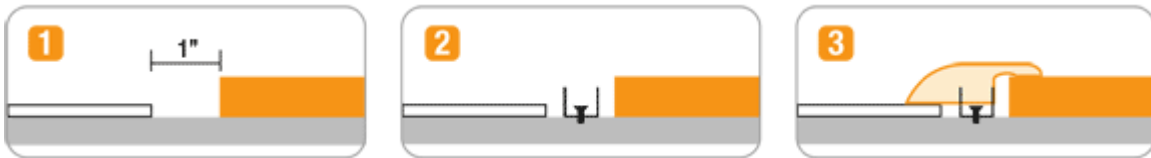


Phone: 877.630.1800

Cork Flooring Hard Surface Reducer



Reducing to vinyl or similar lower height surfaces. Detailed installation instructions for Reducer trim.



1. Allow a gap measuring approx 1" (25mm) in width between the newly installed cork/hardwood floor planks and the adjoining/lower vinyl or similar surface.
2. Install the trim track in the 1" wide channel between the vinyl or similar surface and the newly installed cork/hardwood floor planks. Determine the approx position of the trim track within the channel. Take a moment to measure how the trim will be placed into the channel. The grooves on the back of the trim indicate where the track will insert. Hold the trim slightly above the channel and to determine the desired position. Mark the desired location on the subfloor with a pencil. Once clicked into the track the lip of the trim should cover the cork/hardwood floor on one side while reducing down and covering the vinyl on the other side. Attach the trim track to the subfloor once you determine the desired position for the track within the channel. For wood floors use 4x1/2" screws. For concrete floors use concrete nails and/or a suitable cement adhesive to adhere the track to the cement.
3. Using the trim piece, cut to the desired length, angle the trim into the track. Next starting from the right and working your way to the left, gently begin pushing the trim into the track until the entire trim length is engaged into the track.
4. Always remember to place a piece of plywood over any threshold or transition when moving heavy objects such as furniture.

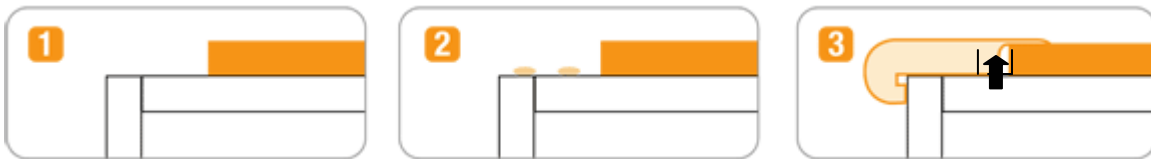


Phone: 877.630.1800

Cork Flooring Stair Nosing



Stair moulding allows you to create stairs out of the cork/hardwood flooring of your choice. The stair nose is the trim piece that covers the front edge of the step. Detailed instructions for stair nose trim.



1. Using the flooring planks, install the riser so that it is flush with the stair. Construction adhesive will adhere the flooring plank to the rise of the step.
2. Using construction adhesive direct glue the flooring plank material to the step of the stair. Allow a channel gap between the outer edge of the riser and the cork/hardwood floor.
3. Using a generous amount of construction adhesive, adhere the entire length and width of the stair nose to the step. At your discretion you may wish to pre-drill holes into the stair nose and countersink 1 1/8 screws every 10". If you choose this method you will need to use color match putty filler to cover the screw hole once complete. The lip of the stair trim should just cover the cork/hardwood floor step on one side, while extending far enough to curve around the rise on the other side.